

CenTor™ Adaptor Systems

Available For All Balancers With 28mm / 36mm / 38mm / 40mm Shafts

Available with a Floor Storage Rack (shown), Wall Storage Rack or No Storage Rack

Adaptor Systems Include:

CenTor Plate #1 CenTor Plate #2

CenTor Plate #3 CenTor Plate #4

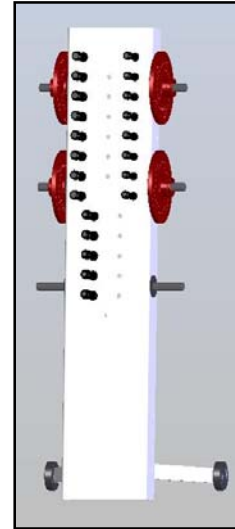
CenTor Studs "A" or "A+" - 8 pieces

CenTor Studs "B" - 8 pieces

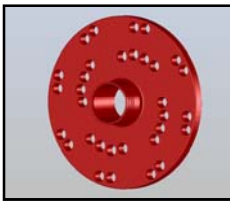
CenTor Studs "C" or "C+" - 5 pieces

Application Chart

**CenTor™ Adaptor System
with Storage Rack**



CenTor™ Adaptor Systems - Individual Plates

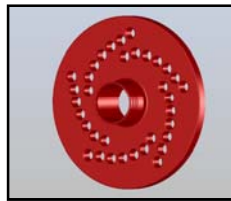


CenTor Plate #1

4 x 100mm, 4 x 4.25"

4 x 110mm, 4 x 4.50"

8 x 6.50", 8 x 170mm



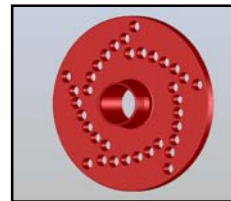
CenTor Plate #2

5 x 100mm, 5 x 110mm

5 x 4.50", 5 x 120mm

5 x 5.00", 5 x 135mm

5 x 150mm



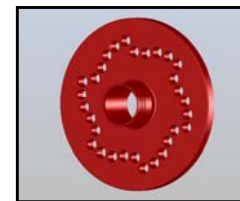
CenTor Plate #3

5 x 4.25", 5 x 112mm

5 x 115mm, 5 x 4.75"

5 x 130mm, 5 x 5.50"

5 x 6.50"



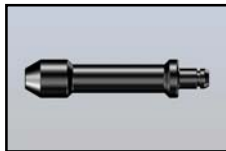
CenTor Plate #4

6 x 4.50", 6 x 115mm

6 x 5.00", 6 x 132mm

6 x 135mm, 6 x 5.50"

CenTor™ Adaptor Systems - Individual Studs



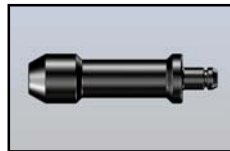
Style "A" & "A+"

Cone Seat

"A" - 85mm body

"A+" - 100mm body

Passenger Car / SUV

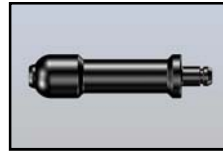


Style "B"

Cone Seat

75mm body

Truck Steel Wheels



Style "C" & "C+"

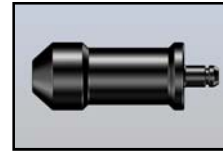
Ball Seat

"C" - 85mm body

"C+" - 105mm body

Acura, Audi, Honda
Mercedes, Porsche

& VW

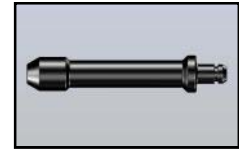


Style "D"

Range Rover Taper

75mm body

Range Rover



Style "E"

Cone Seat - Tuner

95mm body

Tuner Wheels